



BREAKOUT 1:

SZ4D priorities for observations /
models / experiments

Goals for this breakout session

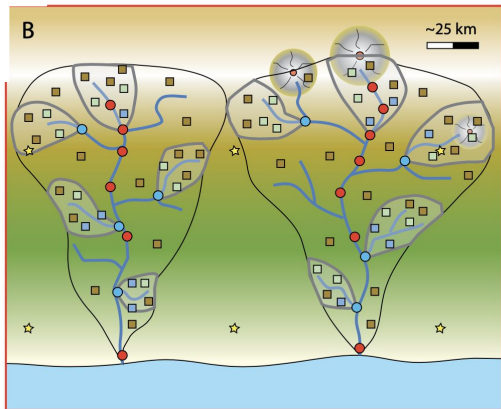


- What components of notional observational plans do you think are particularly important to address the science questions and/or poised to yield exciting new results? What modeling, experimental, and analog site activities should be given high priority?
- How would you adapt notional plans to the specific places highlighted by the SZ4D Implementation Plan?

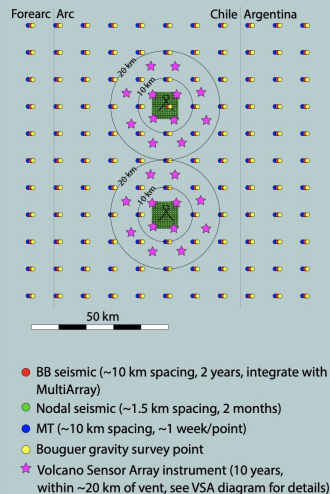
- "Backbone" Stations
- ☆ Stream Gauges
 - Main stem
 - Tributary
- Hillslope Stations
- High-end
 - Mid
 - Low end

Notional plans

- Plans for each group contain many elements, including observational, experimental and numerical components
- Plans have broad geographic context, but lack specificity

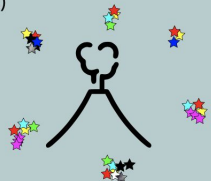


B - Volcano Imaging Arrays
(3 pairs of neighboring volcanoes, campaign/non-telemetered)



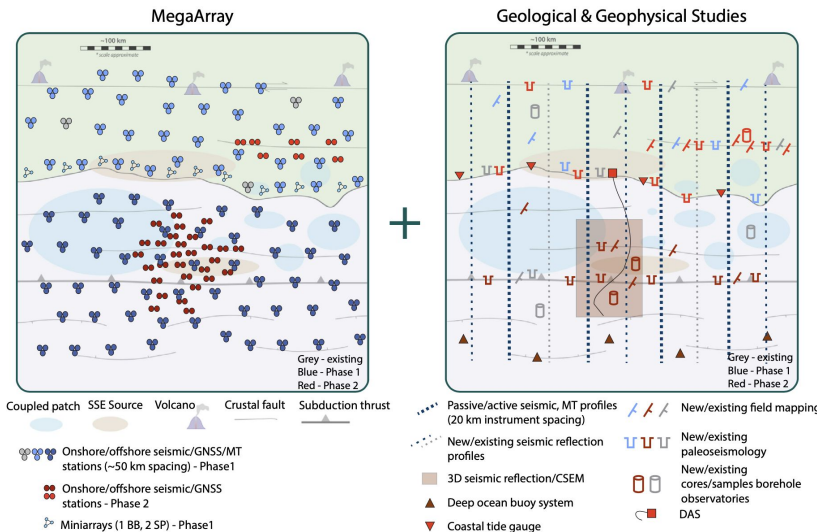
A - Volcano Sensor Arrays

(30-50 volcanoes, 10-year telemetered deployments)



(not to scale, instrument locations are schematic only)

- ☆ Ash Analyzer (4)
- ☆ GNSS (6)
- ★ UV cam (2)
- ★ Seismometer (6)
- ★ Webcam (2)
- ★ MultiGAS/Weather (2)
- ☆ Infrasond (2*3)
- ☆ FLIR (1)
- ☆ Tiltmeter (3)
- ☆ ScanDOAS (3)



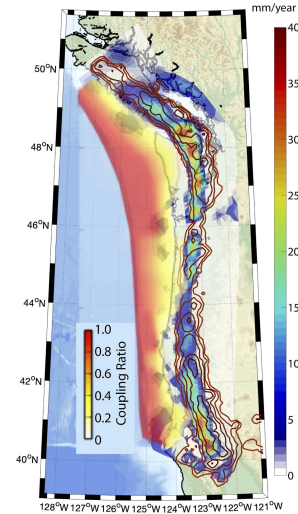
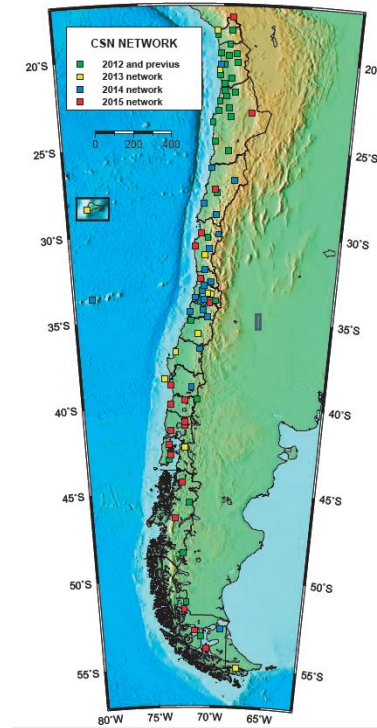
Locations for study

Recommend:

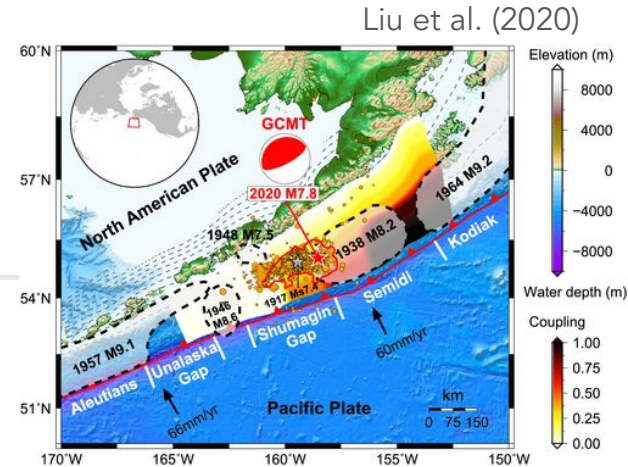
- Complementary domestic and international sites

Regions of Special Interest:

- **Chile**
70% Instrumentation; 50% Activities
- Cascadia
20% Instrumentation; 40% Activities
- Alaska
10% Instrumentation; 10% Activities



Bartlow (2020)



Liu et al. (2020)

Goals for this breakout session



- What components of notional observational plans do you think are particularly important to address the science questions and/or poised to yield exciting new results? What modeling, experimental, and analog site activities should be given high priority?
- How would you adapt notional plans to the specific places highlighted by the SZ4D Implementation Plan?



Reminders before setting out on your task

- The SZ4D Implementation Plan sets out a rough distribution of instrumentation and activities.
- What remains to be decided:
 - Prioritization and refinement of notional plans
 - Adaption of “notional experiments” and notional experimental, numerical and exhumed site plans to real places. How should these experiments and activities be prioritized?
- Feedback from these breakouts will go to the working groups to refine plans.

How we will breakout – by discipline



This breakout session will be divided by disciplinary working group

- Group 1.1 - FEC1: Cottonwood - Anne Bécel (Birthday 1-10)
- Group 1.2 - FEC2: Dogwood - Don Fischer (Birthday 11-20)
- Group 1.3 - FEC3: Arboretum V - Patrick Fulton (Birthday 21-31)
- Group 1.4 - LS1: Arboretum I - Juli Morgan (Birthday 1-15)
- Group 1.5 - LS2: Arboretum II - Sean Gallen (Birthday 16-31)
- Group 1.6 - MDE1: Arboretum III - Philipp Ruprecht (Birthday 1-15)
- Group 1.7 - MDE2: Arboretum IV - Madison Myers (Birthday 16-31)

(simultaneous breakouts will be occurring online for virtual participants)

Breakout Etiquette



- Take a few moments to introduce yourselves.
- Try to limit speaking time to less than 50 seconds, encourage 3-Then-Me (once you've spoken, wait for at least 3 others to have a turn before you speak again).
- Listen attentively and be respectful.
- Do not interrupt. Apologize if you do and return the floor to the speaker.
- Be generous in how you interpret what others are saying.

How we will breakout – by discipline



This breakout session will be divided by disciplinary working group

- Group 1.1 - FEC1: Cottonwood - Anne Bécel (Birthday 1-10)
- Group 1.2 - FEC2: Dogwood - Don Fischer (Birthday 11-20)
- Group 1.3 - FEC3: Arboretum V - Patrick Fulton (Birthday 21-31)
- Group 1.4 - LS1: Arboretum I - Juli Morgan (Birthday 1-15)
- Group 1.5 - LS2: Arboretum II - Sean Gallen (Birthday 16-31)
- Group 1.6 - MDE1: Arboretum III - Philipp Ruprecht (Birthday 1-15)
- Group 1.7 - MDE2: Arboretum IV - Madison Myers (Birthday 16-31)

(simultaneous breakouts will be occurring online for virtual participants)